



2025 DIRT CATALOG



WWW.VENOMPRODUCTS.COM

TABLE OF CONTENTS

TEAM® TIED SECONDARY CLUTCHES.....	2-3
HEAVY DUTY SPIDER INSERT.....	4
TORLON® & COMPOSITE ROLLER UPGRADE.....	4
TEAM® SECONDARY CLUTCH REPLACEMENT PARTS.....	4
HELIXES.....	5
VENOM™ SECONDARY SPRINGS.....	6
DELTRIN WASHERS.....	6
VENOM™ PRIMARY SPRINGS.....	7
ROOSTER™ ADJUSTABLE WEIGHT KITS.....	8
ROOSTER™ REPLACEMENT WASHERS & FASTENERS.....	8
POLARIS PRIMARY CLUTCH CHART.....	9
PRIMARY CLUTCH PULLERS.....	10
SPRING COMPRESSION TOOL & BELT REMOVAL TOOL.....	10

VENOM PRODUCTS ATV/UTV DISTRIBUTORS - CANADA



Recreation Supply Co.
ph. 800-667-7669
Saskatoon, SK Canada
recreationsupply.co

VENOM PRODUCTS ATV/UTV DISTRIBUTORS - USA



3P Clutching
ph. 281-815-0037
Lott, TX
3Pclutching.com



Bikeman Performance
ph. 715-483-3003
Saint Croix Falls, WI
bikemanperformance.com



GBoost Technology
ph. 218-454-4584
Baxter, MN
gboosttechnology.com



Hunterworks
ph. 601-771-0070
Collinsville, MS
hunterworks.com



RVS Performance
ph. 651-500-0657
Cambridge, MN
rvsperformance.com



Aftermarket Assassins
ph. 715-863-2550
Osceola, WI
aftermarketassassins.com



MCB Performance
ph. 810-395-7162
Capac, MI
mcbperformance.com



Gilomen Innovations
ph. 507-645-4555
Northfield, MN
gilomeninnovations.com



Parts Unlimited
Janesville, WI
parts-unlimited.com



Airdam Clutches
ph. 601-883-9929
Vicksburg, MS
airdamclutches.com



EPI Performance
ph. 218-829-6036
Baxter, MN
epiperformance.com



HBR&P Powersports
ph. 816-462-5289
Harrisonville, MO
hbrppowersportsllc.com



Starting Line Products
ph. 208-529-0244
Idaho Falls, ID
startinglineproducts.com



Crash City SXS
ph. 812-569-2808
Scottsburg, IN
crashcitysxs.com

PHOTO CREDITS: ARCTIC CAT®, KAWASAKI®, POLARIS®, SKI-DOO/BRP® and YAMAHA®

Copyright© 2025 by Venom Products, LLC. All rights reserved.



TEAM® TIED SECONDARY CLUTCHES

Upgrade your machine to a TEAM® TIED clutch or replace the one you currently have. Experience the precise shifting that only a Tied design can deliver. These clutches do not come with a spring or helix and they must be purchased separately. Also available is a heavy duty spider insert (Part #286041) recommended for high horse power applications.

APPLICATION CHART

YEAR	GENERAL	XPEDITION	RANGER						RZR								
	1000	1000	500	570	800	900	1000	1000 SOHC (NON XP)	570	800	900	TRAIL 1000	XP 1000	RS1	TURBO	PRO	PRO R
2010	N/A	N/A	930952	N/A	930952	N/A	N/A	N/A	N/A	930952	N/A	N/A	N/A	N/A	N/A	N/A	N/A
2011	N/A	N/A	930952	N/A	930952	N/A	N/A	N/A	N/A	930952	940957	N/A	N/A	N/A	N/A	N/A	N/A
2012	N/A	N/A	930952	N/A	930952	N/A	N/A	N/A	940957	930952	940957	N/A	N/A	N/A	N/A	N/A	N/A
2013	N/A	N/A	930952	N/A	930952	930952	N/A	N/A	940958	930952	940957	N/A	N/A	N/A	N/A	N/A	N/A
2014	N/A	N/A	N/A	940958	930952	940958	N/A	N/A	940958	930952	940957	N/A	940960	N/A	N/A	N/A	N/A
2015	N/A	N/A	N/A	940958	N/A	940958	N/A	N/A	940958	N/A	940958	N/A	940960	N/A	N/A	N/A	N/A
2016	940961	N/A	N/A	940958	N/A	940958	N/A	N/A	940958	N/A	940961	N/A	940961	N/A	BUTTON	N/A	N/A
2017	940961	N/A	940958	940958	N/A	940958	940961	N/A	940958	N/A	940961	N/A	940961	N/A	BUTTON	N/A	N/A
2018	940961	N/A	940958	940958	N/A	940958	P90X or 940961 (CREW)	N/A	CALL	N/A	940961	N/A	940961	BUTTON	BUTTON	N/A	N/A
2019	940961	N/A	940958	940958	N/A	940958	P90X	N/A	CALL	N/A	940961	N/A	940961	BUTTON	BUTTON	N/A	N/A
2020	940961	N/A	940958	940958	N/A	N/A	P90X	940963	CALL	N/A	940961	N/A	940961	BUTTON	BUTTON	P90X	N/A
2021	940961	N/A	940958	940958	N/A	N/A	P90X-HD	940963	CALL	N/A	940961	940961	940961	BUTTON	P90X-HD	P90X-HD	N/A
2022	940961	N/A	940958	940958 or 940963	N/A	N/A	P90X-HD	940963	CALL	N/A	940961	940961	940961	BUTTON	P90X-HD	P90X-HD	G4
2023	940961	N/A	N/A	940958 or 940963	N/A	N/A	P90X-HD	940963	N/A	N/A	940961	940961	940961	N/A	P90X-HD	P90X-HD	G4
2024	940961	P90X-HD	N/A	940958 or 940963	N/A	N/A	P90X-HD	940963	N/A	N/A	940961	940961	P90X-HD	N/A	P90X-HD	P90X-HD	G4
2025	940961	P90X-HD	N/A	940958 or 940963	N/A	N/A	P90X-HD	940963	N/A	N/A	940961	940961	P90X-HD	N/A	P90X-HD	P90X-HD	G4

ACE Model - Call for info.

The 940961 Posted Tied Clutch, replaces the Built On Shaft square puck driven clutch that comes stock on the XP 1000, General 1000 & RZR 1000 in 2016-Up machines.

The 940963 Posted Tied Clutch, replaces the P190X driven clutch that comes stock on the SOHC Ranger 1000.

BASE CLUTCHES

#930952 Retail \$399.00 Clutch Part #930952 is a **direct replacement or upgrade** depending on the trim level for RZR 800's, Ranger 700/800 and Sportsman 500/600/700/800 ATVs. **It does not include a helix or spring.**

#940957 Retail \$399.00 Clutch Part #940957 is a **direct replacement** Posted Tied Clutch. It is the same clutch that comes factory on the machines listed above. **It does not include a helix or spring.**

#940958 Retail \$399.00 Clutch Part #940958 is an **upgrade** from the factory models listed above. It is a Posted Tied Clutch. It replaces the non-tied clutch. **It does not include a helix or spring.**

#940960 Retail \$399.00 Clutch Part #940960 is a **direct replacement** Posted Tied Clutch. It is the same clutch that comes factory on the machines listed above. **It does not include a helix or spring.**

#940961 Retail \$449.00 Clutch Part #940961 is an **upgrade** from the factory models listed above. It is a Posted Tied Clutch. **It does not include a helix or spring.** It replaces the square puck tied B.O.S.S. clutch. Stock helix and spring will NOT work, must order them separately or see stock replacement kit #940102.

#940963 Retail \$449.00 Clutch Part #940963 is an **upgrade** from the factory models listed above. It is a Posted Tied Clutch. **It does not include a helix or spring.** It replaces the P190X stock clutch that comes on 2020+ SOHC rangers. Stock helix and spring will NOT work, must order them separately or see stock replacement kit #940103.

STOCK REPLACEMENT KITS

#940101 Retail \$449.00 Ranger 900 (2014-19) & Ranger 570 (2014+). This kit **includes** a clutch, helix and spring. No primary tuning is needed. Upgrade your machine to the unmatched performance of a TEAM® Tied Clutch. Better back shifting, more spring options and tunable with a removable helix. (Made for a stock machine.)



#940102 Retail \$549.00 In 2016, Polaris changed the RZR 900, RZR XP 1000 and General 1000 (2016+) from the Tied posted roller clutch to a built on shaft secondary (B.O.S.S.) clutch with sliding pucks. Now you can upgrade these machines to the posted Tied roller clutch. Kit **includes** clutch #940961, helix 60-64F EBS and a red secondary spring.

#940103 Retail \$549.00 In model year 2020 Polaris came out with the SOHC motor in their Non-XP Ranger 1000 lineup. Along with the motor change, this workhorse model introduced the new P190X Clutch set. You can now upgrade these machines to the posted Tied Roller Secondary Clutch for greatly increased reliability and performance. This stock replacement kit includes a 940963 Clutch, a 60-64F helix and a Green Silver Secondary Spring. You can run this combination with a stock belt but we recommend installing the heavy duty Polaris Part number 3211172 to maintain similar top end speed and extend belt life.





HEAVY DUTY SPIDER INSERT

The stock RZR 900/1000 driven clutch spider can fail when subjected to more than stock horsepower. Because of this, we tooled up a heavy duty spider that can take much more stress than the stock one. This upgrade is a must for big bore and turbo applications! Replaces Polaris Part #513594.

HEAVY DUTY SPIDER INSERT

Part No.	Description	Retail
286041	Heavy Duty Spider Insert	\$34.95

VENOM PRODUCTS ROLLER UPGRADE

Upgrade square pucks to our round rollers on the 2016-Up Polaris (B.O.S.S.). You can reduce friction in backshift and upshift by changing out the square slider pucks for the Venom Products High Performance Rollers. The result of this is a more consistent tune in different conditions and loads. We have two options for different applications. Replaces Polaris Part #3514926.



The Torlon® rollers are a must for high load applications where you may run the risk of breaking a roller. Applications where you pull heavy loads or run large tires are good for these rollers. If you have ever broken a roller, the Torlon® roller upgrade is a good choice for you.

POLARIS 2016-Up - NO POST REPLACEMENT ROLLERS

Part No.	Description	Retail
460329K	Torlon® Replacement Roller, 2 pack	\$59.99
430335K	Composite Replacement Roller, 2 pack	\$39.99

Torlon®



Composite



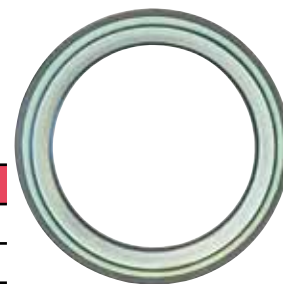
If you have issues with flat spotting rollers, look at our composite roller upgrade. Running for long times at a steady speed is a classic way to flat spot rollers. Flat spotting can cause problems with upshift and backshift.

TIED SPRING CUP

Adding a spring cup to the posted tied driven clutch is a good way to reduce friction and improve spring life. This spring cup came on the factory RZR 1000 clutch and is a nice upgrade for the RZR 900 and Ranger tied post clutches.

TIED SPRING CUP

Part No.	Description	Retail
930712	Tied ATV Spring Cup	\$5.00

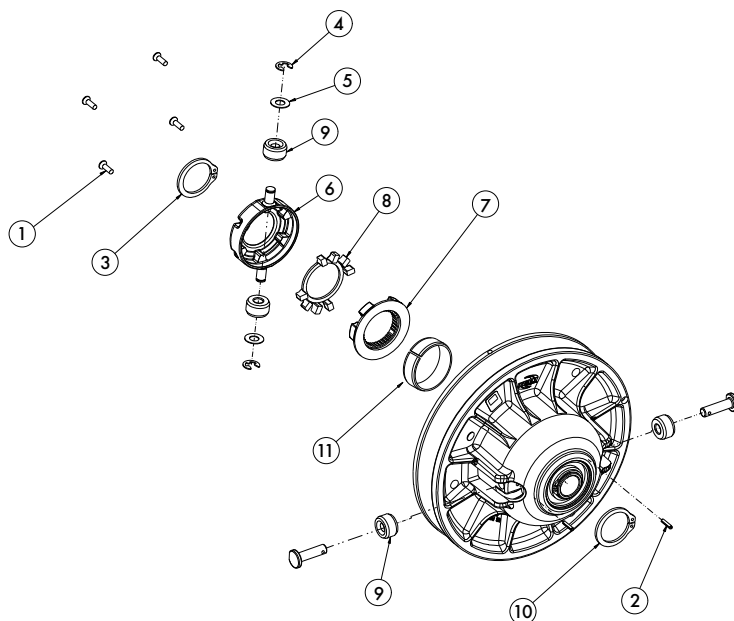


SECONDARY CLUTCH REPLACEMENT PARTS

For clutches #930952, 940957, 940958, 940960, 940961, & 940963

SECONDARY CLUTCH REPLACEMENT PARTS

Item	Part No.	Description	Qty.	Retail
1	105072K	Screw, Machine Torx 10-32 x .625, Set of 4	1	\$7.96
2	125037	Pin, Spring Slotted, .125 x .625	2	\$1.99
3	130032	Ring, Retaining Basic External	1	\$9.99
4	130059	Ring, Retaining Basic External	2	\$7.99
5	150151	Washer, Thrust	2	\$1.99
6	285416	Spider, Outer Dampener Machined	1	\$32.65
7	286041	Heavy Duty Spider, Insert Dampener	1	\$34.95
8	460145	Dampener, Spider	1	\$21.00
9	460079	Roller, Clutch Torlon	1	\$19.99
10	130156	Ring, Retaining	1	\$9.99
11	108131	Bushing, Moveable	1	\$15.00
	150136	Spacer, Belt Shim (0.62 thick)	1	\$4.99
	150177	Spacer, Belt Shim (0.20 thick)	1	\$4.99





WILDCAT XX



CAN AM 3 ROLLER



CAN AM 2 ROLLER



P90X (STEEL)



P90X HD (ALUMINUM)



BUTTON RZR RS1/TURBO



POSTED TIED



30mm NO POST



PRO R (G4)

HELIXES

The driven clutch is the torque sensing part of a CVT. The helix is “the brain” of the driven clutch. Helixes control upshift and backshift in the driven clutch. If you change the load that the CVT system has to work with, if you put on bigger tires or increase gross vehicle weight, you need to lower the helix angles to compensate.

CUSTOM CUT HELIXES AVAILABLE FOR SAME COST AS STANDARD HELIX FOR ALL HELIX TYPES OFFERED.

CALL TO ORDER (218)-844-3283. Call our tech line for angle recommendations or email: tech@venomproducts.com.

ARCTIC CAT - WILDCAT XX (2016-21 AC B.O.S.S.)		
Part No.	Description	Retail
542000	45 STRAIGHT, Non EBS	\$129.00
542001	40-47 FULL, Non EBS	\$129.00
542002	36-45 FULL, Non EBS	\$129.00

POLARIS - P90X - (Steel)		
Part No.	Description	Retail
541000	42 STRAIGHT, BA67	\$149.00
541001	40-44 FULL, BA67	\$149.00
541002	36-42 FULL, BA67	\$149.00

ARCTIC CAT - WILDCAT XX (2022 AC ADAPT)	
CUSTOM CUT CALL TO ORDER 218-844-3283	\$199.00

POLARIS - BUTTON RZR RS1, TURBO (16-20)		
Part No.	Description	Retail
550004	49-53 FULL	\$119.00
550001	50 STRAIGHT	\$119.00
550002	52 STRAIGHT	\$119.00
550003	55 STRAIGHT	\$119.00

CAN AM - 3 ROLLER		
100057-5	42 STR BA60	\$149.00
100057-9	46 STR BA60	\$149.00
100059-5	41-51F Shallow EBS	\$149.00
100059-4	42-46F Shallow EBS	\$149.00

POLARIS - POSTED TIED - PRE 2016/UPGRADED

Part No.	Description	Retail
530106	56-60 FULL, NON EBS	\$119.00
530108	60-54 FULL, 10-21 EBS	\$119.00
530109	62-56 FULL, 10-21 EBS	\$119.00
530110	52-56 FULL, 10-21 EBS	\$119.00
530111	52-58 FULL, 10-21 EBS	\$119.00
530113	54 STRAIGHT, 10-21 EBS	\$119.00
530114	64-58 FULL, 10-21 EBS	\$119.00
530125	66-56 0.33, 10-21 EBS	\$119.00
530126	66-56 0.33 NON EBS	\$119.00
530130	52 STRAIGHT, 10-21 EBS	\$119.00
421721-5	60-64F, 10-21 EBS	\$119.00
421722-6	52-58F, NO EBS	\$119.00

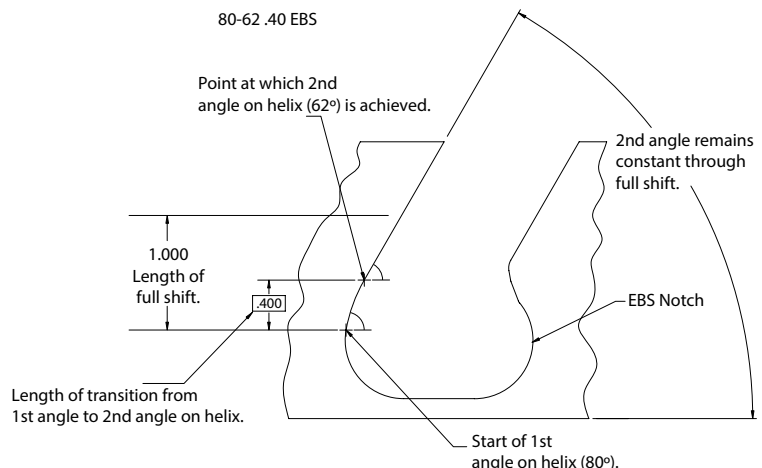
CAN AM - 2 ROLLER		
545001	40 STR EBS	\$129.00
100060-3S	38-42F EBS	\$129.00
545006	40-44F EBS	\$129.00

POLARIS - P90X - HD (Aluminum)		
100080-13	35 STR BA90	\$119.00
100080-17	38 STR BA90	\$119.00
100082-7	36-40 F BA90	\$119.00
100085-3	36-42F BA67	\$119.00

POLARIS - PRO R (G4)		
100090-2	46 STR BA+60	\$199.00
100090-3	48 STR BA+60	\$199.00
100090-4	50 STR BA+60	\$199.00
100094-4	36-45F BA+60	\$199.00
CUSTOM CUT CALL TO ORDER 218-844-3283		\$199.00

POLARIS - 30mm NO POST TEAM® TIED CLUTCH - 2016-Up

Part No.	Description	Retail
543000	60-64 FULL, 10-21 EBS	\$119.00
543001	56-60 FULL, 10-21 EBS	\$119.00
543002	58 STRAIGHT, 10-21 EBS	\$119.00



VENOM™ SECONDARY SPRINGS

Venom™ secondary springs control shift rate. Fine-tune your secondary clutch with our springs manufactured to the most exact specifications. A general rule of thumb is if you increase tire size or vehicle weight, you should increase spring force to slow upshift. Call our tech line for angle recommendations (218) 844-3283 or email: tech@venomproducts.com.



VENOMPRODUCTS.COM

ARCTIC CAT SECONDARY SPRINGS - WILDCAT 1000

Part No.	Force Lbs. @ 2.417"-1.417"	Color	Retail
210451	136-193	Black w/ Part No.	\$34.99
210464	150-221	Black w/ Part No.	\$34.99

ARCTIC CAT SECONDARY SPRINGS - WILDCAT XX

Part No.	Force Lbs. @ 2.6"-1.6"	Color	Retail
210493-006	155-240	Green/Pink	\$34.99
210493-008	180-260	Green/Purple	\$34.99
210493-011	200-280	Green/Black	\$34.99

CAN AM SECONDARY SPRINGS - MAVERICK X3

Part No.	Force Lbs. @ 70mm-43.2mm	Color	Retail
210901-001	155-239	Purple/Yellow	\$34.99
210901-002	183-285	Purple/White	\$34.99
210901-003	178-254	Purple/Silver	\$34.99
210901-004	213-315	Purple/Orange	\$34.99
210901-005	236-350	Purple/Black	\$34.99

CAN AM SECONDARY SPRINGS - DEFENDER (QRS)

Part No.	Force Lbs. @ 61mm-35.2mm	Color	Retail
210270-006	160-303	Orange/Gold	\$34.99
210270-002	180-303	Orange/Blue	\$34.99
210270-005	200-320	Orange/Black	\$34.99
210270-003	204-356	Orange/Purple	\$34.99
210270-004	215-380	Orange/Silver	\$34.99
210270-007	230-303	Orange/White	\$34.99

POLARIS SECONDARY SPRINGS - P90X - P90X HD - P190X

Part No.	Force Lbs. @ 2.65"-1.45"	Color	Retail
210700-002	143-215	Gold/Silver	\$34.99
210700-001	155-230	Gold/White	\$34.99
210700-003	165-250	Gold/Red	\$34.99
210700-004	190-270 (NO P190X)	Gold/Green	\$34.99
210700-005	205-295	Gold/Blue	\$34.99

POLARIS SECONDARY SPRINGS - BUTTON RZR RS1, TURBO (16-20)

Part No.	Force Lbs. @ 2.17"-1.14"	Color	Retail
210601-001	120-180	Dark Blue/Yellow	\$34.99
210601-003	160-200	Dark Blue/Green	\$34.99
210601-004	160-220	Dark Blue/Red	\$34.99
210601-005	185-245	Dark Blue/Orange	\$34.99
210601-006	185-265	Dark Blue/Gold	\$34.99

POLARIS SECONDARY SPRINGS 30mm NO POST TEAM® TIED CLUTCH - 2016-Up (SQUARE PUCK CLUTCH)

Part No.	Force Lbs. @ 2.135"-1.080"	Color	Retail
210600-002	90-160	Orange/White	\$34.99
210600-003	105-175	Orange/Green	\$34.99
210600-004	125-195	Orange/Black	\$34.99

POLARIS SECONDARY SPRINGS - POSTED TIED - PRE 2016/UPGRADED

Part No.	Force Lbs. @ 2.05"-1.05"	Color	Retail
210314-004*	105-165	Red	\$34.99
210314-002	125-190	Bright Green/Silver	\$34.99

*210314-004 = Polaris Part #3234452

POLARIS SECONDARY SPRINGS - NON-TIED CLUTCH (FACTORY)

Part No.	Force Lbs. @ 2.10"-0.95"	Color	Retail
PRUTVSS-002	125-190	Black/Gray/White	\$34.99

POLARIS SECONDARY SPRINGS - PRO R (G4)

Part No.	Force Lbs. @2.65"-1.45"	Color	Retail
210272-001	130-290	Orange/Gold	\$34.99
210272-002	150-290	Orange/Blue	\$34.99
210272-004	170-340	Orange/Purple	\$34.99
210272-005	170-365	Orange/Silver	\$34.99
210272-003	175-310	Orange/Black	\$34.99
210272-006	210-290	Orange/White	\$34.99

YAMAHA SECONDARY SPRINGS - GRIZZLY/RHINO

Part No.	Force Lbs. @ 3.0"-1.75"	Color	Retail
YATVDS-001	135-235	Purple/Yellow	\$34.99
YATVDS-002	160-280	Purple/White	\$34.99
YATVDS-003	160-250	Purple/Silver	\$34.99
YATVDS-004	190-310	Purple/Orange	\$34.99
YATVDS-005	210-345	Purple/Black	\$34.99

DELRIN WASHER

You can greatly reduce the scrubbing friction of the spring in your B.O.S.S. clutch with the Delrin washer. The slippery Delrin washer goes on top of the spring inside the spring cup.

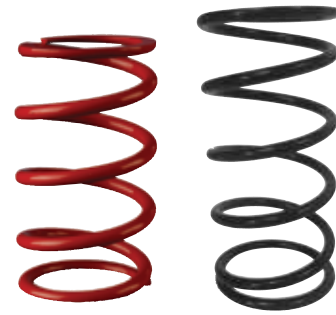


Part No.	Description	Retail
930652	Polaris B.O.S.S. clutch, 3 pack	\$10.00
930651	AC Wildcat XX clutch, 3 pack	\$10.00
930651	Polaris Posted Tied clutch, 3 pack	\$10.00

VENOM PRODUCTS DIRT CATALOG 2025

VENOM™ PRIMARY SPRINGS

Venom™ primary springs control engagement and shift rate. Our springs are made from high tensile wire and will hold rate better than cheap springs. The first force number in the spring chart controls what RPM your clutch engages and the second number controls how fast the clutch upshifts.



ARCTIC CAT PRIMARY SPRINGS - 2013 WILDCAT 1000 & WILDCAT TRAIL

Part No.	Force Lbs. @ 2.36"-1.36"	Color	Retail
210351	74-124	Black/Orange	\$34.99
210412	78-198	Black/Red/Green	\$34.99
210385	82-171	Black/Red/White	\$34.99
210386	83-146	Black/Red/Yellow	\$34.99
210461	88-243	Red/Gold/Silver	\$34.99

ARCTIC CAT PRIMARY SPRINGS - WILDCAT XX

Part No.	Force Lbs. @ 2.25"-1.142"	Color	Retail
210250-001	92-190	Black/Red/White	\$34.99
210250-002	120-247	Black/White	\$34.99
210250-003	145-256	Purple/Blue	\$34.99
210250-004	152-288	Lime Green/Yellow	\$34.99

CAN AM PRIMARY SPRINGS - MAVERICK X3

Part No.	Force Lbs. @ 62mm-30.5mm	Color	Retail
210900-001	117-262	Purple/Blue	\$34.99
210900-002	134-311	Purple/White	\$34.99
210900-003	139-375	Purple/Yellow	\$34.99
210900-004	140-258	Purple/Black	\$34.99
210900-005	157-372	Purple/Green	\$34.99

JOHN DEERE PRIMARY SPRINGS - 825i/835i

Part No.	Force Lbs. @ 2.36"-1.36"	Color	Retail
210462	67-148	Red/Orange/Silver	\$34.99
210351	74-124	Black/Orange	\$34.99
210412	78-198	Black/Red/Green	\$34.99
210385	82-171	Black/Red/White	\$34.99
210386	83-146	Black/Red/Yellow	\$34.99
210461	88-243	Red/Gold/Silver	\$34.99
810014	35-115	Red/Green	\$34.99

POLARIS PRIMARY SPRINGS - 21-Up RZR - PRO & TURBO

Part No.	Force Lbs. @ 2.44" to 1.26"	Color	Retail
210271-001	80-165	Green/White	\$34.99
210271-002	80-200	Grey/Red	\$34.99
210271-003	85-240	Grey/Yellow	\$34.99
210271-006	95-135	Grey/Blue	\$34.99
210271-007	100-155	Grey/Green	\$34.99
210271-005	105-275	Grey/Black	\$34.99
210271-004	115-240	Grey/White	\$34.99

POLARIS PRIMARY SPRINGS - RANGER 2018-24

Part No.	Force Lbs. @ 2.5"-1.25"	Color	Retail
210260-005	46-143	Red/Purple	\$34.99
210260-006	56-157	Red/Silver/Orange	\$34.99
210260-008	55-180	Black/Silver	\$34.99
210260-009	68-130	Black/Orange	\$34.99
210260-011	66-260	Red/Gold/Silver	\$34.99
210260-010	79-160	Red/White/White	\$34.99
210260-012	91-235	Black/White	\$34.99
210260-013	116-260	Black/Pink	\$34.99
210260-016	135-285	Black/Bright Green	\$34.99

POLARIS PRIMARY SPRINGS - (STANDARD 7.25")

Part No.	Force Lbs. @ 2.25"-1.25"	Color	Retail
810018	20-100	Red/White	\$34.99
810000	43-175	Red/Silver/Purple	\$34.99
810014	47-135	Red/Green	\$34.99
810001	55-175	Red/Gold	\$34.99
810003	55-225	Red/Gold/Black	\$34.99
810002	56-140	Red/Yellow	\$34.99
810015	59-175	Red/Orange	\$34.99
810017	63-200	Black/Yellow	\$34.99
810005	65-143	Red/Purple	\$34.99
810004	65-245	Red/White/Black	\$34.99
810007	75-260	Red/Green/Black	\$34.99
810006	76-157	Red/Silver/Orange	\$34.99
810009	80-130	Black/Orange	\$34.99
810008	80-180	Black/Silver	\$34.99
810010	95-160	Red/White/White	\$34.99
810011	105-260	Red/Gold/Silver	\$34.99
810012	120-235	Black/White	\$34.99
810013	145-260	Black/Pink	\$34.99
810016	165-285	Black/Bright Green	\$34.99

POLARIS PRIMARY SPRINGS - RZR RS1, RZR TURBO (16-20), RZR 1000 (24-25), AND EXPEDITION

Part No.	Force Lbs. @ 1.97"-1.06"	Color	Retail
210603-001	55-155	Light Blue/Yellow	\$34.99
210603-002	72-135	Light Blue/White	\$34.99
210603-003	72-155	Light Blue/Green	\$34.99
210603-004	85-180	Light Blue/Red	\$34.99



ROOSTER™ ADJUSTABLE SHIFT WEIGHT KITS

The only shift weight you will ever need! Our Rooster™ adjustable shift weights allow you to put the gram weight right where you need it to optimize your shift curve. Turbo and big bore guys can load them up to use that new found power. Call our tech line for suggestions.



**Kit may vary from photo.*

- Weights adjustable by .5 gram increments
- Includes Thread Locker
- Bushed weights
- Color coded fasteners
- Convenient carrying case

VENOMPRODUCTS.COM

ARCTIC CAT

Part No.	Description	Retail
932008	65g-85.5g, WILDCAT 1000	\$199.00
932016	49.5g-69.5g, WILDCAT TRAIL	\$199.00
932023	50g-71g, WILDCAT XX	\$199.00

CAN AM

Part No.	Description	Retail
932024	55g-71g, MAVERICK X3, 2019-20	\$199.00

JOHN DEERE GATOR, 825i, 835 (PRE 2022)

Part No.	Description	Retail
932015	85g-105g, 825i or 835 (PRE 2022)	\$199.00

POLARIS RZR 2020-Up PRO XP, 2021-Up RZR TURBO (P90X HD)

Part No.	Description	Retail
932025	107.5g-128.5g, RZR PRO XP 2021	\$249.00

POLARIS RZR TURBO 2016-2020 (BUTTON)

Part No.	Description	Retail
932011	50g-71g, RZR XP TURBO 2016-20 Factory Turbo	\$249.00
932021	64g-84g, RZR XP TURBO 2016-20 Stock Profile	\$249.00

POLARIS RZR 570/900/1000

Part No.	Description	Retail
932000	52g-70g, RZR 900/1000	\$199.00
932005	61g-80g, RZR 900/1000	\$199.00
932007	45g-63g, RZR 570 ONLY	\$199.00

POLARIS RANGER XP 1000 (P90X)

Part No.	Description	Retail
931103	86g-106g, Ranger (P90X) XP 1000 2018-Up & 2019 - Up CREW	\$199.00

POLARIS RANGER XP 800/RZR 800/SPORTSMAN

Part No.	Description	Retail
930955	52g-76g	\$199.00
930959	52g-90g	\$199.00
930960	74g-110g	\$199.00

WASHERS & FASTENERS

Part No.	Description	Retail
931001	Aluminum Fastener, 0.8g	\$2.49
931000	Steel Green Fastener, 2.5g	\$2.49
930946	Steel Red Fastener, 3.5g	\$2.49
930947	Steel Fastener, 6g	\$2.49
930943	Thin Washer, 0.5g	\$2.49
930944	Thick Washer, 1.5g	\$2.49
930945	Tungsten Washer, 3.5g	\$8.99
930958	Set of 12 Tungsten Washers, 3.5g each	\$99.00
931997	Set of 3 Bushings - Replacement Bushings For Kits #930955, #930960 (Bearing Dimensions: ID 0.250, OD 0.314, Length 0.250)	\$21.50
931999	Set of 3 Bushings - Replacement Bushings For Kits #932008, #932016, #932023, #932015, #932011, #932021, #932000, #932005, #932007, #930959, #931103 (Bearing Dimensions: ID 0.250, OD 0.314, Length 0.800)	\$21.50

VENOM PRODUCTS DIRT CATALOG

2025

POLARIS PRIMARY CLUTCH CHART

Below is a list for the type of primary clutch that comes stock on your Polaris side x side. Clutch type corresponds to spring type, primary weight type, and what puller you will need to remove the clutch.

APPLICATION CHART

YEAR	GENERAL 1000	RANGER 500	RANGER 570	RANGER 800	RANGER 900	RANGER 1000 REG CAB	RANGER 1000 CREW CAB	RANGER 1000 SOHC	RZR 570	RZR 800	RZR 900	RZR 1000	RZR RS1	RZR TURBO	RZR PRO XP	RZR PRO R
2010	N/A	Standard 7.25"	N/A	Standard 7.25"	N/A	N/A	N/A	N/A	N/A	Standard 7.25"	N/A	N/A	N/A	N/A	N/A	N/A
2011	N/A	Standard 7.25"	N/A	Standard 7.25"	N/A	N/A	N/A	N/A	N/A	Standard 7.25"	Standard 7.25"	N/A	N/A	N/A	N/A	N/A
2012	N/A	Standard 7.25"	N/A	Standard 7.25"	N/A	N/A	N/A	N/A	Standard 7.25"	Standard 7.25"	Standard 7.25"	N/A	N/A	N/A	N/A	N/A
2013	N/A	Standard 7.25"	N/A	Standard 7.25"	Standard 7.25"	N/A	N/A	N/A	Standard 7.25"	Standard 7.25"	Standard 7.25"	N/A	N/A	N/A	N/A	N/A
2014	N/A	N/A	Standard 7.25"	Standard 7.25"	Standard 7.25"	N/A	N/A	N/A	Standard 7.25"	Standard 7.25"	Standard 7.25"	Standard 7.25"	N/A	N/A	N/A	N/A
2015	N/A	N/A	Standard 7.25"	N/A	Standard 7.25"	N/A	N/A	N/A	Standard 7.25"	N/A	Standard 7.25"	Standard 7.25"	N/A	N/A	N/A	N/A
2016	Standard 7.25"	N/A	Standard 7.25"	N/A	Standard 7.25"	N/A	N/A	N/A	Standard 7.25"	N/A	Standard 7.25"	Standard 7.25"	N/A	Slider	N/A	N/A
2017	Standard 7.25"	Standard 7.25"	Standard 7.25"	N/A	Standard 7.25"	Standard 7.25"	Standard 7.25"	N/A	Standard 7.25"	N/A	Standard 7.25"	Standard 7.25"	N/A	Slider	N/A	N/A
2018	Standard 7.25"	Standard 7.25"	Standard 7.25"	N/A	Standard 7.25"	P90X	Standard 7.25"	N/A	Standard 7.25"	N/A	Standard 7.25"	Standard 7.25"	Slider	Slider	N/A	N/A
2019	Standard 7.25"	Standard 7.25"	Standard 7.25"	N/A	Standard 7.25"	P90X	P90X	N/A	Standard 7.25"	N/A	Standard 7.25"	Standard 7.25"	Slider	Slider	N/A	N/A
2020	Standard 7.25"	Standard 7.25"	Standard 7.25"	N/A	N/A	P90X	P90X	P190X	Standard 7.25"	N/A	Standard 7.25"	Standard 7.25"	Slider	Slider	P90X HD	N/A
2021	Standard 7.25"	Standard 7.25"	Standard 7.25"	N/A	N/A	P90X	P90X	P190X	Standard 7.25"	N/A	Standard 7.25"	Standard 7.25"	Slider	P90X HD	P90X HD	N/A
2022	Standard 7.25"	Standard 7.25"	Standard 7.25"	N/A	N/A	P90X	P90X	P190X	Standard 7.25"	N/A	Standard 7.25"	Standard 7.25"	Slider	P90X HD	P90X HD	G4
2023	Standard 7.25"	N/A	Standard 7.25"	N/A	N/A	P90X	P90X	P190X	N/A	N/A	Standard 7.25"	Standard 7.25"	N/A	P90X HD	P90X HD	G4
			P190X													
2024	Standard 7.25"	N/A	Standard 7.25"	N/A	N/A	P90X	P90X	P190X	N/A	N/A	Standard 7.25"	RZR Trail 1000 Standard 7.25"	N/A	P90X HD	P90X HD	G4
			P190X									RZR XP 1000 Slider				
2025	Standard 7.25"	N/A	Standard 7.25"	N/A	N/A	P90X	P90X	P190X	N/A	N/A	Standard 7.25"	RZR Trail 1000 Standard 7.25"	N/A	P90X HD	P90X HD	G4
			P190X									RZR XP 1000 Slider				



PRIMARY CLUTCH PULLERS

Every puller is manufactured from the highest quality steel, heat treated for superior strength and precisely machined for accuracy.

Part No.	Description	OEM	Retail
ARCTIC CAT			
920058	Arctic Cat Clutch Puller (Wildcat X & XX)	0644-650	\$59.95
CAN AM			
920053	Can Am Clutch Puller (Non X3)	529-035-746	\$59.95
352251	Can Am X3 Clutch Puller	529-035-746 529-000-064	\$59.95
KAWASAKI			
352251	Kawasaki Clutch Puller	57001-1404 57001-1429	\$59.95
POLARIS			
920047	SEE CHART BELOW* Button, Standard 7.25" except 570/500	2872085	\$49.95
920054	SEE CHART BELOW* 570/500, SPORTSMAN 570	2870506	\$49.95
920060	SEE CHART BELOW* P90X, P90X-HD, P190X, G4	PU-52422	\$49.95



*POLARIS PULLER CHART

YEAR	GENERAL 1000	RANGER 500	RANGER 570	RANGER 800	RANGER 900	RANGER 1000 REG CAB	RANGER 1000 CREW CAB	RANGER 1000 SOCH	RZR 570	RZR 900	RZR 1000	RZR RS1	RZR TURBO	RZR PRO XP	RZR PRO R
2010	N/A	920054	N/A	920054	N/A	N/A	N/A	N/A	N/A	N/A	N/A	N/A	N/A	N/A	N/A
2011	N/A	920054	N/A	920054	N/A	N/A	N/A	N/A	N/A	920047	N/A	N/A	N/A	N/A	N/A
2012	N/A	920054	N/A	920054	N/A	N/A	N/A	N/A	920054	920047	N/A	N/A	N/A	N/A	N/A
2013	N/A	920054	N/A	920054	920047	N/A	N/A	N/A	920054	920047	N/A	N/A	N/A	N/A	N/A
2014	N/A	N/A	920054	920054	920047	N/A	N/A	N/A	920054	920047	920047	N/A	N/A	N/A	N/A
2015	N/A	N/A	920054	N/A	920047	N/A	N/A	N/A	920054	920047	920047	N/A	N/A	N/A	N/A
2016	920047	N/A	920054	N/A	920047	N/A	N/A	N/A	920054	920047	920047	N/A	920047	N/A	N/A
2017	920047	920054	920054	N/A	920047	920047	920047	N/A	920054	920047	920047	N/A	920047	N/A	N/A
2018	920047	920054	920054	N/A	920047	920060	920047	N/A	920054	920047	920047	920047	920047	N/A	N/A
2019	920047	920054	920054	N/A	920047	920060	920060	N/A	920054	920047	920047	920047	920047	N/A	N/A
2020	920047	920054	920054	N/A	N/A	920060	920060	920060	920054	920047	920047	920047	920047	920060	N/A
2021	920047	920054	920054	N/A	N/A	920060	920060	920060	920054	920047	920047	920047	920060	920060	N/A
2022	920047	920054	920054	N/A	N/A	920060	920060	920060	920054	920047	920047	920047	920060	920060	920060
2023	920047	N/A	920060	N/A	N/A	920060	920060	920060	N/A	920047	920047	N/A	920060	920060	920060
2024-25	920047	N/A	920060	N/A	N/A	920060	920060	920060	N/A	920060		N/A	920060	920060	920060

SPRING COMPRESSION TOOL

Recommended for use when changing springs in the TEAM Rapid Reaction® snowmobile or ATV secondary clutch.

SPRING COMPRESSION TOOL

Part No.	Description	Retail
930001	Spring Compression Tool	\$99.95
930003	Spring Compression Tool - 3/8" Rod	\$99.95



930001

- Easy-to-use
- Corrosion-resistant aircraft quality steel
- Compact
- Durable
- Impact-resistant

- Smaller threaded rod fits primary & B.O.S.S. secondary clutches.
- Tool breaks down to fit better in your toolbox
- Strong enough for our stiffest springs.



930003

BELT REMOVAL TOOL

Make changing belts easy.

Part No.	Description	Retail
930002	Clutch, Belt Removal Tool - Champ, P90X, P90X-HD, G4	\$7.95
650343	Clutch, Belt Removal Tool - WILDCAT	\$7.95



IMPORTANT NOTICE – READ BEFORE ORDERING!

WARNING: THE HIGH-PERFORMANCE PRODUCTS LISTED IN THIS CATALOG ARE NOT FOR INSTALLATION OR OPERATION BY “CONSUMERS,” AS DEFINED BY THE MAGNUSON-MOSS WARRANTY ACT.

Installation of performance parts requires good mechanical ability and a complete understanding of the entire machine. The instructions we provide are guidelines only and will not thoroughly explain how to set up a racing vehicle. Claims of performance gains, durability, etc., are based on the experience of Venom Products and others and do not constitute a guarantee of similar performance in every application. We believe the contents and specifications of this catalog to be correct. We assume no liability for any errors in listings, specifications, part numbers, prices or model applications. We reserve the right to change specifications, product descriptions, product quality, pricing and application at any time without notice.

WARRANTY

The products are provided “as is” and there are no warranties, representations or conditions, expressed or implied, regarding them or any other goods or services provided by Venom Products. Venom Products disclaims any implied warranty or condition of merchantability, durability, or fitment for a particular purpose. No representation or other affirmation of fact, including but not limited to oral or written statements regarding performance of the products, shall be deemed to be a warranty by Venom Products. In no event will Venom Products be liable for incidental, indirect, special, or consequential damages, or any damages whatsoever resulting from loss of use in connection with these products.

PRICING

Prices are suggested retail and in U.S. funds. We reserve the right to change pricing at any time without notice.

ORDERING

Orders may be made via the internet 24 hours a day at www.venomproducts.com.

Orders also may be placed by phone by calling (218-844-3283), 8-5pm central, Monday through Friday.

PAYMENT

We accept VISA, MasterCard, Discover, and PayPal.

DAMAGED SHIPMENTS

Indicate “damaged” when you sign for the materials. Keep the shipping carton and hold the goods. Notify us by phone for instructions. Any damaged goods MUST be reported within 7 days of the date of invoice.

REFUSED SHIPMENTS

A \$25.00 charge for processing will be assessed. All future shipments will be made only by credit card or certified check.

RETURNS

Customers may return product for credit when the following procedures are followed: Please call (218) 844-3283 for a return merchandise authorization (RMA). Include a copy of the original invoice and a note containing your name, address, phone number and a brief explanation for the return. Returns without this information will be delayed. All returns are for credit only. No cash or check refunds given. All returned items must be in new condition. Any installed or used item will not be accepted. You may try the item for fitment purposes only. Electronic merchandise or special orders cannot be returned under any circumstance. Only new, uninstalled parts can be returned and are subject to a 20% restocking fee. (Under no circumstances will any product be accepted or considered for return after 30 days from invoice date.)

SHORTAGES

Venom Products must be notified within 7 days of receiving a shipment of shortages to an order. All shipments should be inspected thoroughly.

HOURS

Online orders accepted 24 hours a day. Phone orders: 8am-5pm CT., Monday through Friday, at 218-844-3283.

Tech Support is available by email: tech@venomproducts.com or by phone Monday - Friday 12pm-4pm.

SALES TAX

Sales tax will be added to your order as necessary.

SHIPPING & HANDLING CHARGES

Freight charges are the responsibility of the customer. Our standard shipping method is UPS ground within the continental U.S. Shipping to Alaska, Canada and foreign countries is subject to additional charges. Other shipping methods are also available and are subject to additional fees. Shipping charges will be assessed after the order is complete.

NOTES:



FOLLOW US ON



WWW.VENOMPRODUCTS.COM
WWW.FACEBOOK.COM/VENOMPRODUCTSLLC
PHONE: 218.844.3283